



USER MANUAL

EZCaster-264

EZCaster-264DVD



<http://www.techwerks.tv>

Copyright ©2010 Tech Werks, Inc.

INDEX PAGE

GETTING STARTED.....	PAGE 2
OPENING SCREEN.....	PAGE 2
WARNING – Could not connect to your account.....	PAGE 2
YOU HAVE NOT OPENED AN ACCOUNT.....	PAGE 3
PLANNING ON USING YOUR OWN STREAMING SERVICE.....	PAGE 3
YOU ARE NOT CONNECTED TO A NETWORK.....	PAGE 3
YOU DO NOT HAVE INTERNET ACCESS.....	PAGE 3
YOUR FIREWALL IS BLOCKING THE EZCASTER.....	PAGE 4
POWERING OFF THE EZCASTER.....	PAGE 4
MAIN SCREEN.....	PAGE 5
START.....	PAGE 5
STOP.....	PAGE 5
STREAM.....	PAGE 5
RECORD.....	PAGE 5
ON-DEMAND.....	PAGE 6
VIDEO PREVIEW WINDOW.....	PAGE 6
AUDIO ADJUSTMENT.....	PAGE 6
SETUP.....	PAGE 6
UPLOAD.....	PAGE 6
STATUS WINDOW.....	PAGE 7
AUDIO VU METERS.....	PAGE 7
AUTO PUBLISH.....	PAGE 8
SETUP.....	PAGE 9
VIDEO INFO.....	PAGE 10
SELECT INPUTS.....	PAGE 10
VIDEO INPUTS.....	PAGE 11
LOGO SETUP.....	PAGE 11
NETWORK SETUP.....	PAGE 12
STREAM SETUP.....	PAGE 13
SCREEN SETUP.....	PAGE 13
TIME SETTINGS.....	PAGE 14
SOFTWARE UPDATE.....	PAGE 14
DELETE FILES.....	PAGE 15
DOWNLOAD NEW SETTINGS.....	PAGE 15
UPLOAD.....	PAGE 16
DVD Option.....	PAGE 17

GETTING STARTED

The EZCaster is shipped with a Quick Start Manual. Due to the different models of the EZCasters, it is recommended you reference the Quick Start that shipped with your EZCaster for connection instructions and setting up your On-line account. It is also recommended you create your On-line management account before you turn the EZCaster on.

Once you have connected your audio, video and Internet to the EZCaster, press the power button and turn on the EZCaster.

WARNING- The touch screen will not turn on at the same time as the EZCaster on. The EZCaster has to start the boot up process BEFORE the touch screen turns on; this may take a minute. The blue power light on the side of the touch screen should turn on automatically and the touch screen will turn on. If after a minute the power light does not turn on, press and release the power button on the side of the touch screen; wait for 3 seconds and the blue light should turn on.

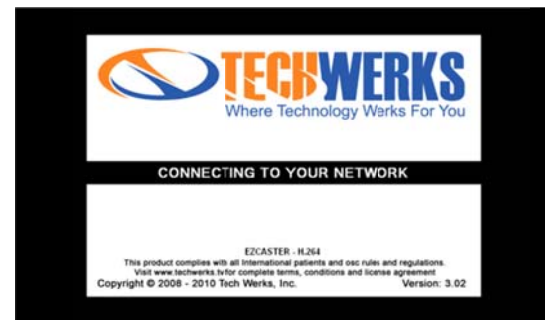
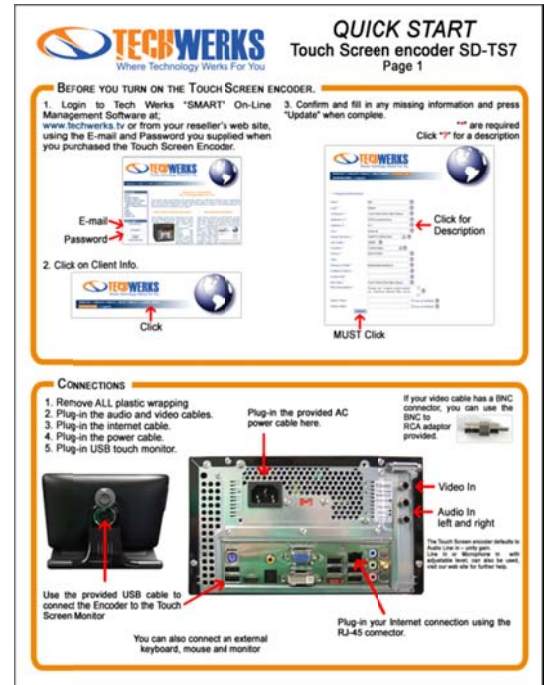
The opening screen has a status window in the middle of the screen. The status window will display information regarding the boot up procedure. At the bottom of the opening screen is displayed the type of encoder and the software version number.

1. The EZCaster will first connect to your network and Internet. This may take up to a minute, depending on your network.
2. The EZCaster will download all your custom settings from your On-line management account.
3. The EZCaster will setup the video compression engines.
4. The EZCaster will download all your graphics that you have uploaded via your On-line management account.

After the boot up procedure is completed, you will see the main encoder screen. In the center you should see your video source. You are now ready to broadcast live, record on-demand content, and burn a DVD (DVD option required).

If in the center of the screen you see "WARNING Could not connect to your account," The EZCaster could not download your personalized settings from your On-line account. This could be caused by one of the following:

- You have not opened an Account.
- You are planning to use your own streaming service.
- You are not connected to a network.
- You do not have Internet access.
- Your firewall is blocking the EZCaster from connecting.



YOU HAVE NOT OPENED AN ACCOUNT – Shipped with the EZCaster is a Quick Start Manual which explains the best way to open an account. If you are still having issues opening an account call 828-484-1588.

YOU ARE PLANNING TO USE YOUR OWN STREAMING SERVICE – On the “WARNING” screen, click NO, and on the next screen “Do you want to recall last configuration” click YES. It is recommended that you now disable the EZCaster from connecting to the Data Base. Click SETUP, click STREAM SETUP, and click FTP. On this page uncheck, ALWAYS DOWNLOAD SETTINGS. Also on this page, you can setup your FTP information and live stream authentication.

YOU ARE NOT CONNECTED TO A NETWORK – In the bottom right corner of the “WARNING” screen is the EZCaster’s current IP address. If this displays 0.0.0.0 or 169.x.x.x, then the EZCaster is not connected to your network or your router did not issue an IP address to the EZCaster. Check your LAN connections; one of the first things you should check is the back of the EZCaster. Where the CAT-5/RJ45 connector is located, there should be a solid green and flashing yellow light. If these lights are not illuminated, the EZCaster has no connection to your router. When you have a connection and the EZCaster is assigned an IP address, the address will be displayed in the bottom right corner of the “WARNING” screen. When you have an IP address, you can click YES and try to re-connect to your account.

If your network does not support DHCP, you will have to manually enter the IP information. Click SETUP, and click NETWORK SETUP. Uncheck ENABLE DHCP and enter your IP information on the right. When you click DONE, the EZCaster will try to connect to your network. When you return to the setup page, click BACK. On the “WARNING” screen click YES and try to re-connect to your account.

YOU DO NOT HAVE INTERNET ACCESS – If you have a valid IP address in the bottom right corner of the “WARNING” screen, you may not have access to the Internet. This could be caused by several issues. If you are on a “Pay-To-Play” network, like is found in hotels, normally, you will have to enter a pass code or enter a credit card number. Click SETUP, click NETWORK SETUP, and click LOGIN. The network’s authentication page should be displayed. Here you can enter your pass code or credit card number. If you click LOGIN and you receive a screen that shows your public IP address, you are on the Internet and you may have other issue. You should contact your IT department.

HINT: The EZCaster can be used to record ON-DEMAND and MPEG2/DVD (DVD option required) without an Internet connection.



Assuming you have had the EZCaster connected to your account in the past, the EZCaster will save all your personalized settings. Then when you use the EZCaster without an Internet connection, at the “WARNING” screen, click NO, and at the “RECALL LAST CONFIGURATION” screen, click YES.

YOUR FIREWALL IS BLOCKING THE EZCASTER FROM CONNECTING – On very secure networks, the IT department will block all in-coming and out-going ports except for the ones that are needed. The EZCaster uses port 3306 to connect to the remote database. So you will have to have your IT department enable port 3306. You may also have to have the IT department open your video streaming port. This information can be found by clicking SETUP, and clicking STREAM SETUP. In the top of the screen you will see SERVERIP:PORT; in the text box will be displayed the IP address you are streaming to, followed by the port you will be streaming on.

POWERING OFF The EZCaster – The proper way to turn off the EZCaster is to press and hold the power button for 5 seconds. If there is a reset button on the front of the EZCaster, this has been disabled.



MAIN SCREEN

START – This starts the encoding engines. Depending what you have selected, Stream, On-Demand or Record (DVD option) determines which encoder engine will start. At least one of the three engines must be selected. The LIVE WMV stream always starts when you click START.

STOP – This stops ALL encoding engines. If you are encoding, On-Demand, the Auto-Publish screen will appear when all encoding engines have stopped. If you have NOT STARTED the encoding engines, the Auto-Publish screen will appear and you can Auto-Publish the last video you encoded. Even if you power the EZCaster off, Auto-Publish will auto publish the last video you encoded before you powered the EZCaster off (DVD option). You can click STOP, on the Auto-Publish page, click NO and the BURN DVD page to be displayed.

STREAM – When you turn on the EZCaster it defaults with STREAM enabled indicated by bright green. When you click START, the STREAM will turn yellow as it connects to the server and then red when you are streaming live.

Before you click START, you can click STREAM; it will change to yellow, putting STREAM in standby. When you click START, the live stream will not start. After you have clicked START, you can click STREAM to start the live stream.

HINT: At any time during your LIVE streaming, you can click STREAM to start and stop the live stream. If you lose the Internet connection and your live stream stops, you can click STREAM, stopping only the live stream and then click STREAM again, to re-start the live stream. This will not stop the On-Demand recording

RECORD (DVD option) – When you turn on the EZCaster it defaults with RECORD enabled indicated by bright green. When you click START, RECORD will turn yellow, starting the recording of a broadcast MPEG2 file; RECORD will turn red when the file is recording.

Before you click START, you can click RECORD; it will change to yellow, putting RECORD in standby and will not record when you click START. After you have clicked START, you can click RECORD to start recording. At any time during your recording, you can click RECORD to insert a chapter mark on the DVD. The STATUS window will indicate a new chapter number has been set.



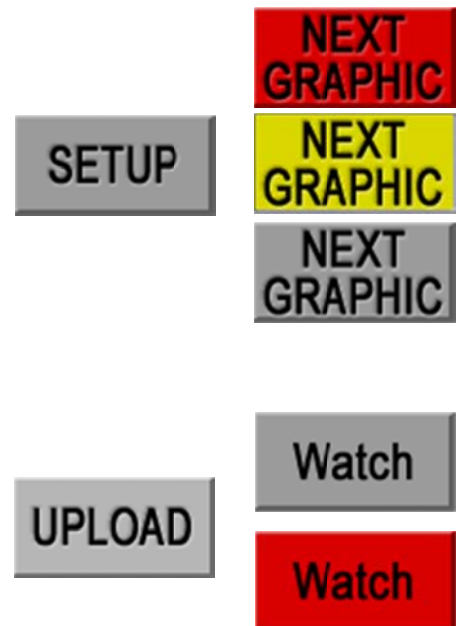
ON-DEMAND – When you turn on the EZCaster it defaults with ON-DEMAND enabled indicated by bright green. When you click START, ON-DEMAND will turn yellow, starting the recording of a H.264 file; ON-DEMAND will turn red when the file is recording. Before you click START, you can click ON-DEMAND; it will change to yellow, putting ON-DEMAND in standby and will not start recording when you click START. After you have clicked START, you can click ON-DEMAND to start recording.

VIDEO PREVIEW WINDOW – Located in the center of the screen, this is where your incoming video is displayed with your Logo and Auto-Graphics. This display is only a preview window and it may not play at 30fps. If “Enable Video Icon Grab” is enabled via your on-line management software, you can click on the VIDEO PREVIEW WINDOW and it will grab the current video frame for your video icon. The STATUS window will indicate Video Icon Grabbed.

AUDIO ADJUSTMENT – If you select variable gain from SELECT INPUT via SETUP screen, the audio adjustment knob will appear. You can adjust the audio level by sliding the adjustment knob up and down or by clicking on the + and – at the top and bottom of the slider. Audio inputs are described in the Quick Start.

SETUP – Click on SETUP to display the setup page. When you start encoding, this button is disabled. If you enabled AUTO- GRAPHIC ON, via LOGO SETUP page, and you start encoding, the SETUP button will change to NEXT GRAPHIC. **RED: NEXT GRAPHIC** – a graphic is currently on air. **YELLOW: NEXT GRAPHIC** – The graphic is in transition. **GRAY: NEXT GRAPHIC**- you have reached the end of the graphics playlist. Graphics play list is built using your On-line management account.

UPLOAD – Click UPLOAD will display the manually upload page. This page allows you to upload any video you have on the video hard drive. If “Enable Video Icon Grab” is enabled via your on-line management software, you can select a new video icon from a video file and upload the video icon. When you are streaming live, this button will change to WATCH. Click WATCH will open a picture over the video (this is not being encoding in the video) and display your live video stream from the video server. You can use this to confirm your live stream.



STATUS WINDOW – The STATUS WINDOW defaults displaying DURATION: and AUTO STOP: values. When you start encoding, DURATION: will display the duration the encoder has been encoding. AUTO STOP: will display a countdown to when the EZCaster will STOP encoding. When the EZCaster is not encoding, AUTO STOP: will display if it is ENABLED or DISABLED. If “AUTO START” is enabled via your on-line management software, The STATUS WINDOW will display AUTO START ENABLED AT: with the time of day the EZCaster will start encoding. The STATUS WINDOW will display VIDEO ICON GRABBED, when a video icon is grabbed either automatically or manually. The STATUS WINDOW will display CHAPTER # SET, when a new chapter is selected (optional DVD).

AUDIO VU METERS – The audio VU meters display a graphical representation of the audio level. The left bar displays the left audio channel, and the right bar displays the right audio level. Perfect audio levels would be if the audio level reaches the yellow bars and occasionally reach the center of the yellow bars.

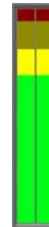
DURATION: STOPPED AUTO STOP: ENABLED

DURATION: 00:00:09 AUTO STOP: 01:59:51

AUTOSTART ENABLED AT 09:45:00

VIDEO ICON GRABBED

CHAPTER 14 SET



AUTO PUBLISH

When you are encoding and you click STOP, all the encoders are stopped. When they are stopped, the AUTO PUBLISH page will open. STATUS WINDOW- in the center of the screen is the STATUS WINDOW. ENCODER: Displays the name of select video file on the EZCaster that will be AUTO PUBLISHED. The center of the STATUS WINDOW is the upload progress bar and graphically displays the percentage of progress. BYTES TRANSFERRED: displays the number of bytes that have been uploaded to the server. At the bottom of the window is the dialog box, which displays the responses from the server.

YES - This starts the AUTO PUBLISH process. If "Enable Video Icon Grab" is enabled via your on-line management software, the last grabbed video icon will be uploaded to the video server. Then the video file will be uploaded. After the video has been uploaded, the metadata (information in the VIDEO INFO page and video duration) regarding the video will be sent to your on-line management software. The video is now published on your HTML generated by the On-line management software. Emails will be sent to your email addresses that are in your account (DVD option). Once the video file starts uploading the BURN DVD page will open.

NO-Returns back to the main encoding screen and will not upload anything (DVD option). the BURN DVD page will open.

HINT: If you turn off the EZCaster and then turn it back on, you can click STOP on the main encoder page, and the AUTO PUBLISH page will open. The last video you recorded, before you turned the EZCaster off, will be the video that will be Auto published.



SETUP

There are 10 setup buttons:

Video Info – Video information that is published on your HTML page and information that is embedded as metadata in the video.

Select Inputs – Selects Audio and Video inputs and video standard.

Video Setup – Gives you a graphic display of the video level and adjustable level controls.

Logo Setup – Sets up video overlays and enables Auto-Graphics.

Network Setup – Sets up IP settings and enable Video Drive sharing.

Stream Setup – Selects and changes video encoding profiles and sets up FTP information.

Screen Setup – Calibrates the touch screen and sets up multiple monitors.

Time Settings – Sets internal clock sets up and enable Auto-Stop, and sets up and enable date and time overlay.

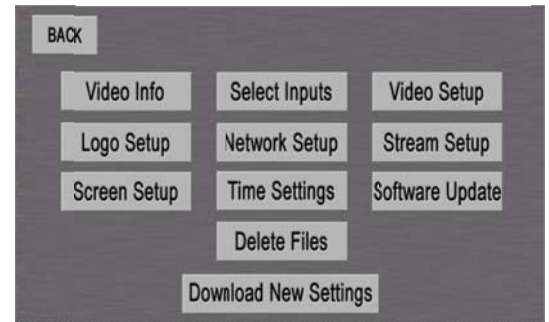
Software Upgrade – Downloads and installs software upgrades

Delete Files – Selects and deletes files, either one at a time or by “age”.

There are also 2 additional buttons:

Download New Settings – Downloads new settings from your on-line account, including graphics.

Back – Returns back to the main encoder screen.



VIDEO INFO

This information is embedded in the video as Meta Data. Also, this information is used to display the video on an HTML page generated by the On-Line Management Software. This information is first downloaded from the On-line management software when the EZCaster is turned on or when you click "DOWNLOAD NEW SETTINGS." You can change this information in the On-line Management software under "NEXT VIDEO." To change this information on the EZCaster, click in any of the text boxes, Title, Description, Copyright, Author or Rating, either by using the On-screen keyboard or an external keyboard.

DONE- Saves this information and returns you to the setup page.

HINT: This information can be edited after the video is Auto-Published, using the On-line Management Software.



SELECT INPUTS

Depending on the EZCaster model, you will have different selections. EZCaster-WMV and EZCaster-264 – there are two different audio selections:

LINE IN UNITY GAIN – this selects the two RCA audio inputs. There is no level control. This input is set at +8 0VU. This is the primary audio input and should be used.

MIC/LINE IN VARIABLE GAIN – this selects the mini (1/8") stereo inputs on the computer motherboard. You can plug in to either Microphone (pink) or Line (blue) inputs. When you return to the main encoder screen, the audio adjustment slider will be visible on the left side of the screen.

Depending on which model of the EZCaster you will have, a pop down box to select the input type, Composite, S-Video, etc.

There is a video standard "pop down" box. The EZCaster currently supports Analog video: NTSC, PAL-B, PAL-M, PAL-H, PAL-D, SECAM-L, SECAM-B, SECAM-D.

DONE- Saves this information and returns you to the setup page. When you make a selection and you click DONE, the EZCaster has to reset the video and this may take a few seconds.



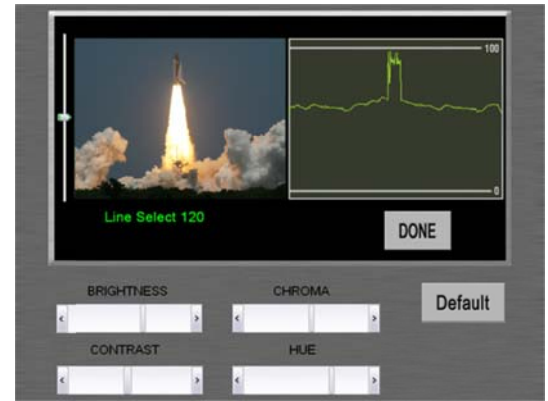
VIDEO SETUP

On the left side of the screen is the video preview window. On the left side of the video preview window is the line selector that will select the video line to be graphically displayed on the right. Directly below the video preview window is the line number you have selected.

On the right side of the screen is the graphical display of the video luminance value (brightness) of the line you have selected. Using the CONTRAST and BRIGHTNESS sliders at the bottom of the screen, you can adjust the levels so any “white” in the picture is just touching the 100% line at the top and anything “black” in the picture is just touching the 0% line at the bottom. There are also CHROMA and HUE slider controls. Use CHROMA to adjust the amount of color in the picture and HUE to adjust the tint of the picture. You should use these controls only if the “flesh tones” of people do not look correct.

DEFAULT – will return the video levels back to a default setting.

DONE – Saves this information and returns you to the setup page. When you make a selection and you click DONE, the EZCaster has to reset the video and this may take a few seconds.



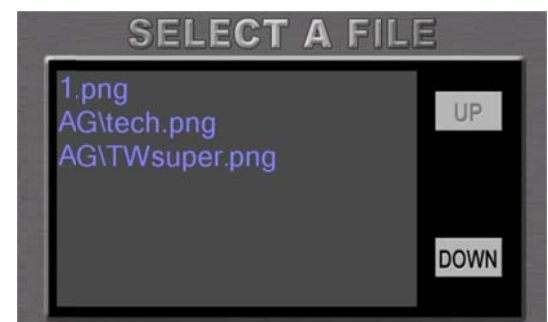
LOGO SETUP

On the left side of the screen is the video preview window with your graphic overlay. On the left side and bottom of the video window are two sliders. Use these sliders to move the logo on the video screen. Under the video preview window, you can enable AUTO GRAPHIC ON or enable LOGO ON. Enabling AUTO GRAPHICS will enable the graphic play list created in your On-Line management software account. You can then use either the NEXT GRAPHIC button on the front of the EZCaster, or click on the graphic you want to display in your graphic playlist via the On-Line management software. When you enable LOGO ON, the logo will be displayed over your video.

On the right side of the screen is the graphic preview window. To set the “KEY” color (color that will be removed and the video will show through) you can use the RED, GREEN and BLUE values at the bottom of the screen. If you don’t know the exact RGB values, using the graphic preview window, you can click on the color you want to select as the “KEY” color.

At the bottom of the screen is the TRANSPARENCY slider. This changes the opacity of the logo.

BROWSE – Opens the browser page to select a graphic from the hard drive. In the center of the browse screen is the list of valid graphics (png, jpg, bmp) on the video hard drive. If there are any graphics that have been uploaded using the On-Line management software they will be in the AG folder. It is recommended that you use PNG files with NO



anti-aliasing graphics between the logo color and the key color. This will create clean edges between the logo color and the “KEY” color. Use the UP / DOWN buttons to navigate the list. Click on the graphic you want and you will automatically return to the LOGO SETUP page with the graphic you select displayed on the right preview window.

DEFAULT- This will return the horizontal and vertical logo sliders to their default position.

DONE- Saves this information and returns you to the setup page.

NOTE: Logo vertical and horizontal positions and transparency are only active with Logo, not with Auto Graphics.

NETWORK SETUP

ENABLE DHCP – Enables and disables DHCP on the EZCaster, if you disable DHCP, networks settings on the right will become active.

IP Address, Sub Mask, Gateway, DNS1, DNS2 displays the current values. If DHCP is enabled the values displayed are the values assigned by your router. If you Disable DHCP, you can click in value windows on the right and manually set the values.

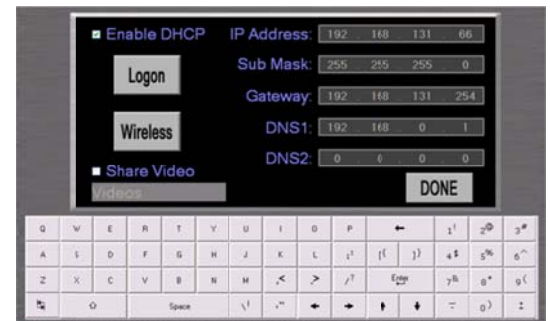
LOG ON – This will open a “browser” window. If you are on the Internet and NOT being blocked, your public IP address will be displayed. If you are on a “Pay-To-Play” network, like you might find in a hotel, you can use this window to enter your credit card information or passcode.

WIRELESS – This will open a third party wireless interface. This will allow you to join a Wi-Fi network.

ENABLE SHARE VIDEO – Enables sharing of the video hard drive of the EZCaster on your network. When you enable sharing, a network group will be created on your network “TECH-xxxxxxx.”You can access this network group with any computer on the network. USER: administrator, PWD: video. Below ENABLE SHARE VIDEO you can enter the name of the drive that will appear on your network.

DONE – Saves this information and returns you to the setup page.

NOTES: When you select DONE, the EZCaster will disconnect from your network and re-connect, and this may take several seconds.



STREAM SETUP

Everything on this page is downloaded from your On-Line management account and should not have to be changed.

SERVERIP: PORT – This is the IP address and port the EZCaster will connect to for the live stream. To the right of SERVERIP:PORT is a pop down box; you can select the type of transport stream, UDP is the default, RTP, HTTP and MMSH.

ENABLE STOP DELAY – This will enable a stop delay on the On-Demand recording. Due to the latency to process the video, the On-Demand encoding engine is a few seconds late and may cut off the last 2-3 seconds of your recording. If you are encoding short videos that require exact endings and you don't want to cut them off then enable this option. The default is disabled.

LIVE and ON-DEMAND – Kbps, encoding bit rate. FPS, frames per second the video is encoded. Horizontal x Vertical pixels the video will be sized to.

FTP- opens the FTP page. The information on this page is downloaded from your on-line account. FTP Server, FTP User and FTP PWD are used to log in to a FTP server. Video User and Video PWD are used for authentication to a live video server. Always Download Settings enable, the EZCaster will login to your on-line account and download all the custom settings, Graphics and Auto-playlist. Disable the EZcaster will use your settings. Default is enabled. **DONE** – saves your settings and returns back to Network Setup.

DONE- Saves this information and returns you to the setup page.

SCREEN SETUP – An alert box will pop up, “Are you sure you want to calibrate the Touch Screen?”

Click YES, the screen will go white, and you must TOUCH each X in the corners. After you touch all 4 Xs, you have to click OK.

Click NO, and another alert box will appear, “Are you sure you want to run this control panel?”

Click YES, and the standard Windows Display Properties will open. You can setup a second monitor

Click NO, and all is cancelled



TIME SETTINGS

TIME SETTINGS – opens the standard Windows Date and Time Properties.

ENABLE AUTO STOP – Enables auto stop.

HOUR/MINUTE: Set the hours and minutes the EZCaster will encode before it stops encoding. This can be set from 1 minute to 24 hours and 59 minutes.

ENABLE AUTO PUBLISH – Automatically Auto Publishes the video.

AUTO STOP, stops the encoding.

ENABLE TIME STAMP – Displays Date and Time over video. This Date and Time are “Burnt” in to the encoded video.

FONT SIZE – Sets the font size of the Date and Time over the video.

TOP: Position the Date and Time stamp at the top of the video.

BOTTOM: Positions the Date and Time stamp at the bottom of the video.

RED: Sets the Date and Time font color to red.

WHITE: Sets the Date and Time font to white.

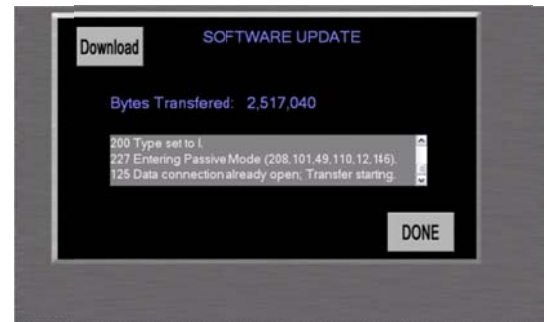
DONE- Saves this information and returns you to the setup page.



SOFTWARE UPDATE

DOWNLOAD- Downloads the latest software for your EZCaster. a pop up box will confirm you want to upgrade the software. If you click OK, the installer will install your new software. You will have to follow and answer the questions. Once the new software has been installed, you will be prompted to turn off the EZCaster and then back on.

DONE – Returns you to the setup page.



DELETE FILES

BROWSE – this will open a browse page. All of your videos will be displayed in the center window. Use the UP/DOWN buttons to navigate. Click on the video you want to delete. You will automatically be returned to the delete files page. You can select as many file as you want.

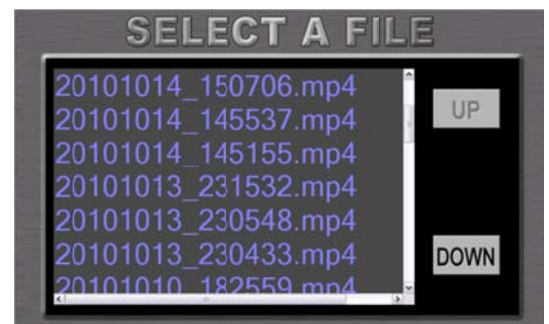
AUTO LIST – This will automatically select all the files that are older than the days indicated in the window below the AUTO LIST button. You can change the days, by click in the day's window and enter a number.

DELETE FILES WINDOW – click on any file name and this will play the video. This way you can confirm the files you have in the DELETE FILES WINDOWS are the files you want to delete. When the player window opens the video will play, **DON'T DELETE** – closes the Player window and removes that file from the DELETE FILE WINDOW. **DONE** – returns you to the DELETE FILES.

DELETE- Deletes all files in the DELETE FILES WINDOW.

DONE- Removes all files from the DELETE FILES WINDOW and returns you to the setup page. No files are deleted.

NOTE: Below the DELETE FILES WINDOW is displayed a percentage of hard drive space free. It is recommended you share the video drive (via NETWORK SETUP) and use your "office" computer to copy and delete videos from the EZCaster's hard drive.



DOWNLOAD NEW SETTINGS

This will connect to your On-line account and download all your settings, including: encoder settings, next video info, auto graphic play list, graphics that have been uploaded, etc. When the EZCaster is done downloading, you will be returned to the setup page.

BACK

BACK - closes the setup page and returns you to the main encoding screen.

UPLOAD

STATUS WINDOW– Located in the center of the screen is the status window. **ENCODER:** name of select video file on the EZCaster. **SERVER:** the video file name on the server. In the center of the **STATUS WINDOW** is the up-load progress bar which graphically displays the percentage of the upload progress. **BYTES TRANSFERRED:** displays the number of bytes up-loaded to the server. At the bottom of the **STATUS WINDOW** is the dialog box; this display the responses from the server.

BROWSE – Opens the browser window; you can click any video you want to upload or convert. Use the UP/DOWN buttons to navigate.

CONVERT – Converts the video file you have selected. The encoder uses the ON-Demand profile. This can be changed on the **STREAM SETUP** page.

UPLOAD – the upload button on the left uploads the video file to the video server. It also uploads the last video icon captured.

PLAY – this will play the selected video file.

SHUTTLE BAR – you can slide the shuttle bar to navigate through the video.

STOP – stops the video and displays the **STATUS WINDOW**.

GRAB ICON – grabs the video frame that is currently displayed in the player window.

UPLOAD – the upload button on the right uploads the last video icon grab. It does not upload the video file. The video icon is automatically attached to the video name in the **STATUS WINDOW** encoder file name.



DVD Option

If you have recorded a MPEG-2 file by enabling the RECORD light on the main menu, you have the option to create a DVD. After you stop the encoder, by pressing STOP, the Auto Publish screen will open. If you click YES, your on-demand video will begin uploading and BURN DVD screen will open. If on the Auto Publish page you click NO, the BURN DVD screen will open.

To create a DVD, several things have to be created.

YES – When you click YES, the last video file you recorded on the EZCaster will be used to create a DVD folder. In the DVD folder, the EZCaster will create an AUDIO_TS folder and a VIDEO_TS folder. In these folders the EZCaster will create all the DVD compliant files. This creates an Auto Play DVD. Next, the EZCaster uses the DVD folder to create a DVD.ISO file.

BURN TO DVD – If this option is enabled, after the .ISO file is created, the EZCaster will burn a DVD image on the built-in DVD burner. A 3rd party program will open and will burn the DVD. When it is completed burning your DVD, the DVD drive will eject. You must manually close the 3rd party DVD burning program by clicking the X in the top right corner.

NO – this will cancel the DVD creation and DVD burning process and closes the BURN DVD program.

BACK – The DVD burning process will continue, and you will be returned to the EZCaster encoding program.

HINT: You can share the video drive on your network and you can copy any file on the Hard Drive. The MPEG-2 files are in the broadcast folder. In the broadcast folder the DVD.ISO file is saved. In the broadcast folder is the DVD folder, where the AUDIO_TS and VIDEO_TS folder are created.

If you want to use your own DVD authoring program, copy the .MPG file to your authoring program. You will not have to re-encode this file; it is DVD compatible.

You can copy the DVD folder or the DVD.ISO file to your computer, and you can use these files to burn your own DVDs.

MEDIA COMPATIBILITY- DVD-R

